



# Diva

design  
Domitalia

## Diva

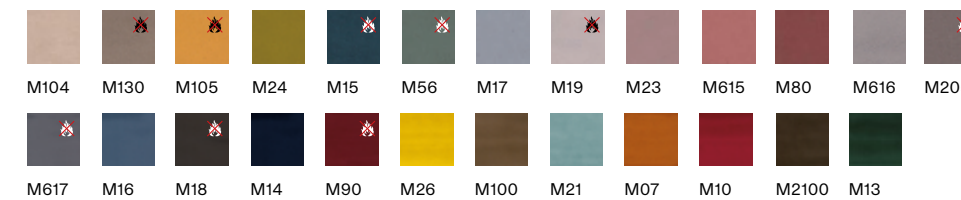


L 47 cm  
 P 60 cm  
 H 92 cm  
 HS 47 cm

Struttura / Structure  
Verniciato / Lacquered



Seduta / Seat  
Tessuto / Fabric MIRAGLIO



Tessuto / Fabric BOGOTÀ



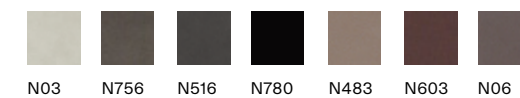
Tessuto / Fabric LAS VEGAS



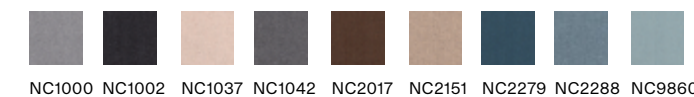
Pelle / Leather



Ecopelle / Imitation Leather NOBUKO



Lana / Wool NORDIC

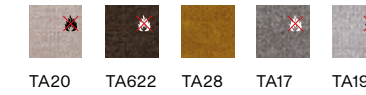


Tutti i colori  
All colors

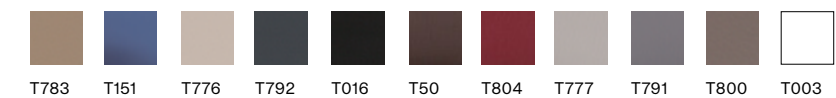
Ecopelle / Imitation Leather ALCE



Tessuto / Fabric TARANTINO



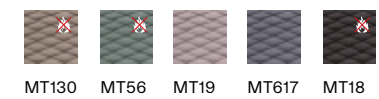
Ecopelle / Imitation Leather TIME



Tutti i colori  
All colors

Rivestimento trapuntato opzionale per il cuscino  
Optional quilted cushion upholstery

Tessuto / Fabric MIRAGLIO-T Trapuntato / Quilted



Ignifugo  
Flame-retardant







# Diva-I

design  
Domitalia

## Diva-I

☰ L 47 cm  
 ☷ P 60 cm  
 ☷ H 92 cm  
 ☷ HS 47 cm



Disponibile  
 bicolore  
 Available  
 bicolor

### Rivestimento / Upholstery Tessuto / Fabric MIRAGLIO



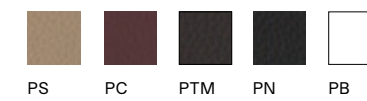
### Tessuto / Fabric BOGOTÀ



### Tessuto / Fabric LAS VEGAS

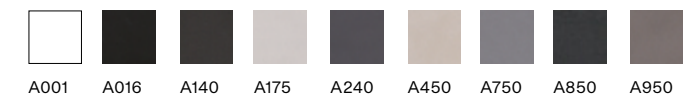


### Pelle / Leather



Tutti i colori  
All colors

### Ecopelle / Imitation Leather ALCE

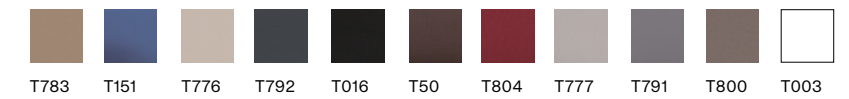


Tutti i colori  
All colors

### Ecopelle / Imitation Leather NOBUKO



### Ecopelle / Imitation Leather TIME



Tutti i colori  
All colors

### Lana / Wool NORDIC



Tutti i colori  
All colors

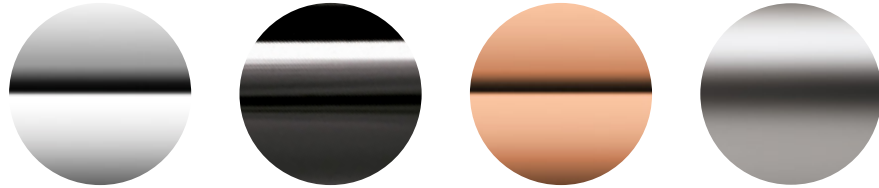
Ignifugo  
 Flame-retardant



# Finiture / Finishes

## Acciaio - Steel - Stahl - Acier - Acero

### Chromato - Chromed

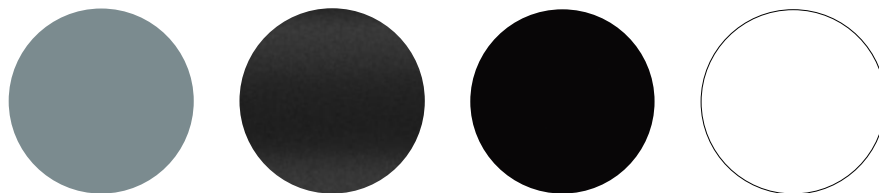


- C**  
Cromato  
Chromed  
Verchromt  
Chrome  
Cromado
- CN**  
Cromato nero  
Black chromed  
Verchromt Schwarz  
Chrome noir  
Cromado negro
- OR**  
Oro rosa  
Rose gold  
Rosafarbenen goldes  
Or rosé  
Oro Rosado
- NIS**  
Nichel spazzolato  
Stainless nickel  
Edelstahl  
Acier brossé  
Niquel inoxidable

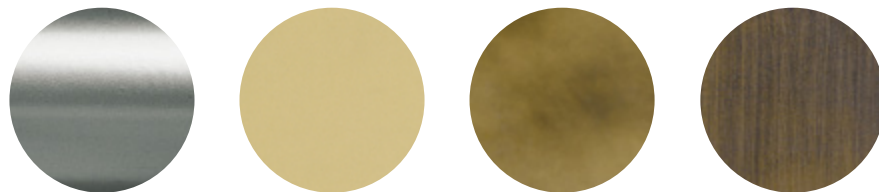
### Verniciato - Lacquered



- SA**  
Sabbia opaco  
Sand matt  
Sand matt  
Sable mat  
Arena mate
- TO**  
Tortora opaco  
Taupe matt  
Taubengrau matt  
Taupe mat  
Tórtora mate
- RU**  
Ruggine opaco  
Rust matt  
Rost matt  
Rouille mat  
Herrumbre mate
- SE**  
Senape opaco  
Mustard matt  
Senf matt  
Moutarde mat  
Mostaza mate
- VS**  
Verde salvia opaco  
Light green matt  
Hellgrün matt  
Vert sauge mat  
Verde claro mate



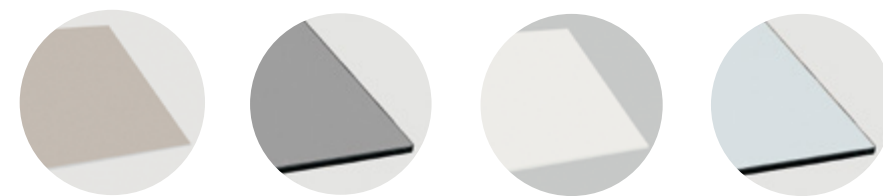
- AZ**  
Azzurro opaco  
Light blue matt  
Hellblau matt  
Azur mat  
Azul mate
- AN**  
Antracite opaco  
Anthracite matt  
Anthrazit matt  
Anthracite mat  
Gris oscuro mate
- NE**  
Nero opaco  
Black matt  
Schwarz matt  
Noir mat  
Negro mate
- BI**  
Bianco opaco  
White matt  
Weiß matt  
Blanc mat  
Blanco mate



- AS**  
Alluminio satinato  
Satinated aluminium  
Alufarbig satiniert  
Aluminium satiné  
Aluminio satinado
- GO**  
Oro opaco  
Gold matt  
Gold matt  
Or mat  
Oro mate
- ON**  
Oro nuvolato  
Cloudy gold  
Bewölktes Gold  
Or nuageux  
Oro nublado
- BS**  
Ottonato  
Brassed  
Brassed  
Laitonné  
Latonato

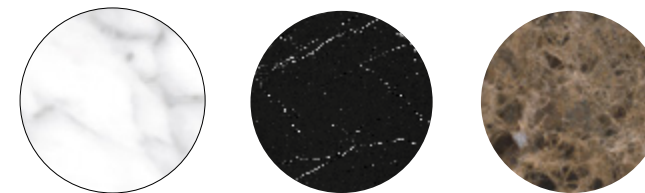
# Finiture / Finishes

## Vetro temprato - Tempered glass - Sicherheitglas - Verre trempé - Vidrio templado



- VCA**  
Acidato corda  
Rope acid-etched  
Seil satiniert  
Corde traité à l'acide  
Cuerda tratado al ácido
- VTS**  
Fumè trasparente  
Transparent smoke  
Transparent rauch  
Fumè transparent  
Humo transparente
- VBA**  
Acidato bianco  
White acid-etched  
Weiss satiniert  
Blanc traité à l'acide  
Blanco tratado al ácido
- VT**  
Trasparente, filo lucido  
Transparent, straight edge  
Transparent, gerade kante  
Transparent, chant droit  
Transparente, borde recto

## Marmo - Marble - Marmor - Marbre - Mármol



- MCAM**  
Bianco carrara opaco  
White Carrara matt
- MMNM**  
Nero Marquina opaco  
Black Marquina matt
- MEMM**  
Emperador opaco  
Emperador matt
- MCAG**  
Bianco carrara lucido  
White Carrara glossy
- MMNG**  
Nero Marquina lucido  
Black Marquina glossy
- MEMG**  
Emperador lucido  
Emperador glossy



# Finiture / Finishes

# Tessuto / Fabric – Stoff – Tissu – Tejido

## Bogotá

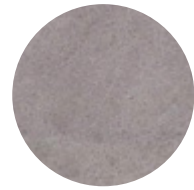
**Composizione**  
Composition:  
100% PL  
**Solidità alla luce**  
Light fastness:  
≥ 4  
**Resistenza all'abrasione**  
Abrasion resistance:  
Martindale  
≥ 30.000 cicli / cycles



**BO615**  
Beige  
Beige  
Beige  
Beige  
Beige



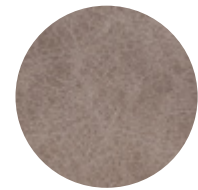
**BO622**  
Fumo  
Smoke  
Rauch  
Fumé  
Humo



**BO17**  
Perla  
Pearl  
Perle  
Perle  
Perla



**BO100**  
Asfalto  
Road  
Asphalt  
Asphalte  
Asfalto



**BO130**  
Tortora  
Taupe  
Braungrau  
Taupe  
Gris topo



**BO02**  
Cammello  
Camel  
Kamel  
Chameau  
Camel



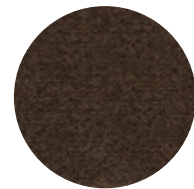
**BO205**  
Ferro  
Iron  
Eisen  
Fer  
Hierro

## Tarantino

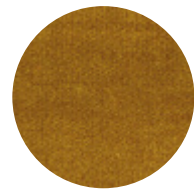
**Composizione**  
Composition:  
12% VI - 88% PL  
**Solidità alla luce**  
Light fastness:  
≥ 4  
**Resistenza all'abrasione**  
Abrasion resistance:  
Martindale  
≥ 100.000 cicli / cycles



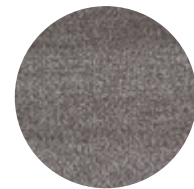
**TA20**  
Sabbia  
Sand  
Sand  
Sable  
Arena



**TA622**  
Castano  
Chestnut  
Kastanien braun  
Châtain  
Castaño



**TA28**  
Zafferano  
Saffron  
Safran  
Safran  
Azafrán



**TA17**  
Cenere  
Ash  
Asche  
Cendre  
Ceniza



**TA19**  
Perla  
Pearl  
Perle  
Perle  
Perla



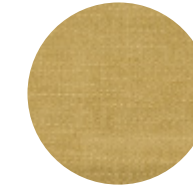
# Finiture / Finishes

# Tessuto / Fabric – Stoff – Tissu – Tejido

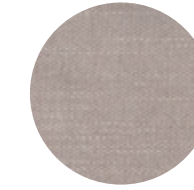
## Las Vegas

**Composizione**  
Composition:  
12% VI - 88% PL  
**Solidità alla luce**  
Light fastness:  
≥ 4  
**Resistenza all'abrasione**  
Abrasion resistance:  
Martindale  
≥ 80.000 cicli / cycles

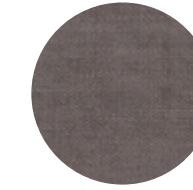
**Antimacchia**  
Stain repellent



**LV28**  
Limone  
Lemon  
Zitron  
Citron  
Limòn



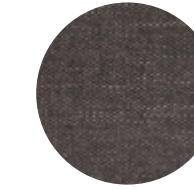
**LV616**  
Oyster  
Oyster  
Auster  
Huitre  
Ostra



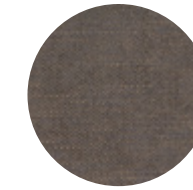
**LV622**  
Talpa  
Dark taupe  
Dunkles Taupe  
Taupe foncé  
Marrón oscuro



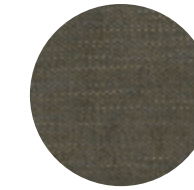
**LV20**  
Lino  
Linen  
Leinen  
Lin  
Lino



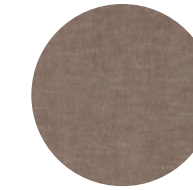
**LV100**  
Cenere  
Ash  
Asche  
Cendre  
Ceniza



**LV11**  
Fango  
Mud  
Schlamm  
Boue  
Barro



**LV204**  
Bosco  
Wood  
Holz  
Bois  
Madera



**LV130**  
Tortora  
Taupe  
Braungrau  
Taupe  
Gris topo



# Finiture / Finishes

# Tessuto / Fabric – Stoff – Tissu – Tejido

## Miraglio

**Composizione**  
Composition:  
100% PL  
**Solidità alla luce**  
Light fastness:  
≥ 4  
**Resistenza all'abrasione**  
Abrasion resistance:  
Martindale  
≥ 100.000 cicli / cycles

**Idrorepellente**  
Water-repellent



**M104**  
Crema  
Cream  
Crème  
Crème  
Crema



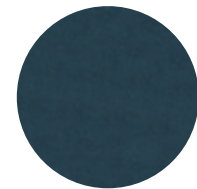
**M130**  
Cachi  
Khaki  
Khaki  
Kaki  
Caqui



**M105**  
Mandarino  
Tangerine  
Mandarine  
Mandarin  
Mandarina



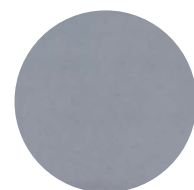
**M24**  
Oliva  
Olive  
Olive  
Olive  
Aceituna



**M15**  
Petrolio  
Petrol  
Erdoel  
Pétrole  
Petróleo



**M56**  
Cadetto  
Sage green  
Graugrün  
Vert sauge  
Salvia



**M17**  
Carta da zucchero  
Egg blue  
Blassblau  
Carte de sucre  
Celeste



**M19**  
Pervinca  
Periwinkle  
Hellviolett  
Pervenche  
Violeta



**M23**  
Rosa  
Pink  
Rose  
Rose  
Rosa



**M615**  
Salmone  
Salmon  
Lachs  
Saumon  
Salmón



**M80**  
Terracotta  
Brick  
Ziegel rot  
Brique  
Ladrillo



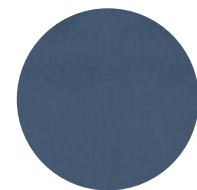
**M616**  
Cenere  
Ash  
Asche  
Cendre  
Ceniza



**M205**  
Fumo  
Smoke  
Rauch  
Fumé  
Humo



**M617**  
Ardesia  
Slate  
Schiefer  
Ardoise  
Pizarra



**M16**  
Avio  
Air force blue  
Blau-grau  
Bleu  
Avio



**M18**  
Carbone  
Charcoal  
Kohle  
Charbon  
Carbón



**M14**  
Oltremare  
Deep sea  
Tiefsee  
Eau profonde  
Agua profunda



**M90**  
Amaranth  
Amaranth  
Amaranto  
Amaranto  
Amaranto



**M26**  
Zafferano  
Saffron  
Safran  
Safran  
Azafrán



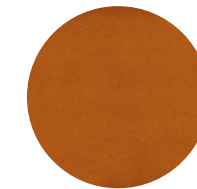
**M100**  
Tronco  
Trunk  
Kofferraum  
Coffre  
Tronco

# Finiture / Finishes

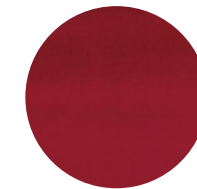
# Tessuto / Fabric – Stoff – Tissu – Tejido



**M21**  
Turchese  
Turquoise  
Türkis  
Turquoise  
Turquesa



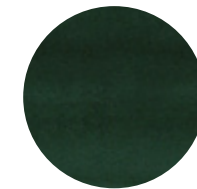
**M07**  
Ruggine  
Rust  
Rost  
Rouille  
Herrumbre



**M10**  
Scarlatto  
Scarlet  
Scharlach  
Écarlate  
Escarlata



**M2100**  
Bistrot  
Bistro  
Bistro  
Bistrot  
Bistro

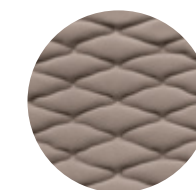


**M13**  
Felce  
Fern  
Farn  
Fougère  
Helecho

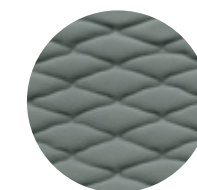
## Miraglio-T

**Composizione**  
Composition:  
100% PL  
**Solidità alla luce**  
Light fastness:  
≥ 4  
**Resistenza all'abrasione**  
Abrasion resistance:  
Martindale  
≥ 100.000 cicli / cycles

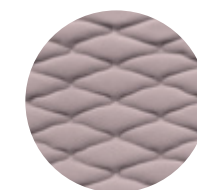
**Idrorepellente**  
Water-repellent



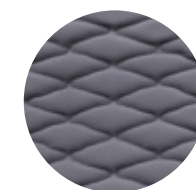
**MT130**  
Cachi  
Khaki  
Khaki  
Kaki  
Caqui



**MT56**  
Cadetto  
Sage green  
Graugrün  
Vert saug  
Salvia



**MT19**  
Pervinca  
Periwinkle  
Hellviolett  
Pervenche  
Violeta



**MT617**  
Ardesia  
Slate  
Schiefer  
Ardoise  
Pizarra



**MT18**  
Carbone  
Charcoal  
Kohle  
Charbon  
Carbón



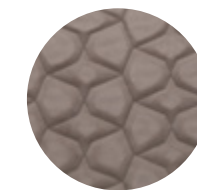
## Miraglio-TM

**Composizione**  
Composition:  
100% PL  
**Solidità alla luce**  
Light fastness:  
≥ 4  
**Resistenza all'abrasione**  
Abrasion resistance:  
Martindale  
≥ 100.000 cicli / cycles

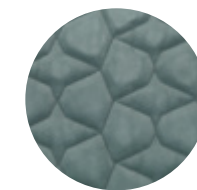
**Idrorepellente**  
Water-repellent



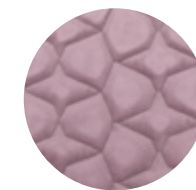
**MTM104**  
Crema  
Cream  
Crème  
Crème  
Crema



**MTM130**  
Cachi  
Khaki  
Khaki  
Kaki  
Caqui



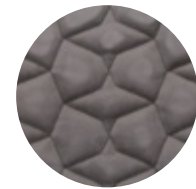
**MTM56**  
Cadetto  
Sage green  
Graugrün  
Vert saug  
Salvia



**MTM23**  
Rosa  
Pink  
Rose  
Rose  
Rosa



**MTM80**  
Terracotta  
Brick  
Ziegel rot  
Brique  
Ladrillo



**MTM205**  
Fumo  
Smoke  
Rauch  
Fumé  
Hu



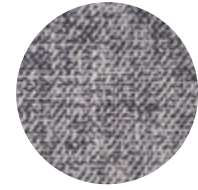
**MTM617**  
Ardesia  
Slate  
Schiefer  
Ardoise  
Pizarra

# Finiture / Finishes

# Tessuto / Fabric – Stoff – Tissu – Tejido

## Sake

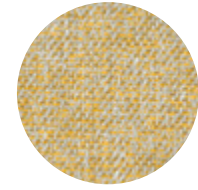
**Composizione**  
Composition:  
34% CO, 32% VI, 13% AC,  
14% LI, 7% PL  
**Solidità alla luce**  
Light fastness:  
≥ 4/5  
**Resistenza all'abrasione**  
Abrasion resistance:  
Martindale  
≥ 20.000 cicli / cycles  
**Resistenza al pilling**  
Pilling:  
4



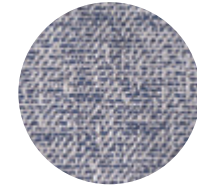
**SK01**  
Cenere  
Ash  
Asche  
Cendre  
Ceniza



**SK02**  
Tortora  
Taupe  
Braungrau  
Taupe  
Gris topo



**SK03**  
Ocra  
Ochre  
Ocker  
Ocre  
Ocre



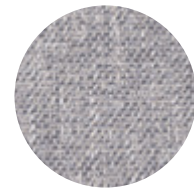
**SK06**  
Notte  
Night  
Nacht  
Nuit  
Noche



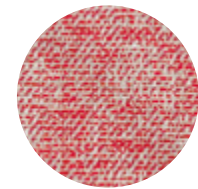
**SK10**  
Ghiaccio  
Ice  
Eis  
Glace  
Hielo



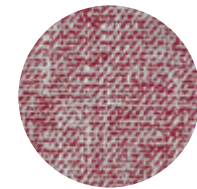
**SK12**  
Corda  
Rope  
Seil  
Corde  
Cuerda



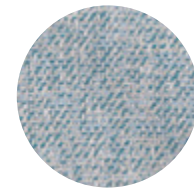
**SK13**  
Grigio  
Grey  
Grau  
Gris  
Gris



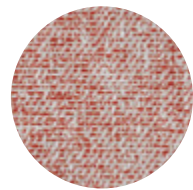
**SK20**  
Ciclamino  
Cyclamen  
Zyklamen  
Cyclamen  
Cyclamen



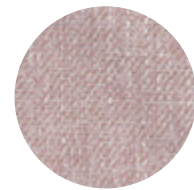
**SK25**  
Bordeaux  
Bordeaux  
Bordeaux  
Bordeaux  
Burdeos



**SK42**  
Acquamarina  
Aquamarine  
Aquamarin  
Agu-marine  
Aguamarina



**SK45**  
Ruggine  
Rust  
Rost  
Rouille  
Herrumbre



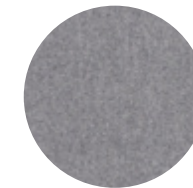
**SK46**  
Rosa  
Pink  
Rose  
Rose  
Rosa

# Finiture / Finishes

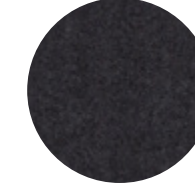
# Lana / Wool – Wolle – Laine – Lana

## Nordic

**Composizione**  
Composition:  
70% WO, 25% PA, 5% AF  
**Solidità alla luce**  
Light fastness:  
5  
**Resistenza all'abrasione**  
Abrasion resistance:  
Martindale  
≥ 100.000 cicli / cycles



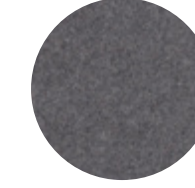
**NC1000**  
Grigio  
Grey  
Grau  
Gris  
Gris



**NC1002**  
Carbone  
Charcoal  
Kohle  
Charbon  
Carbón



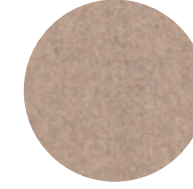
**NC1037**  
Beige  
Beige  
Beige  
Beige  
Beige



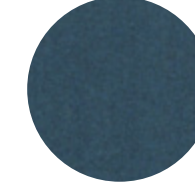
**NC1042**  
Acciaio  
Steel  
Stehlen  
Acier  
Acero



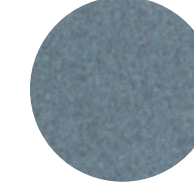
**NC2017**  
Castano  
Chestnut  
Kastanien braun  
Chatain  
Castaño



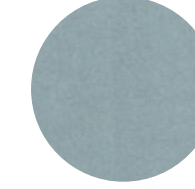
**NC2151**  
Sabbia  
Sand  
Sand  
Sable  
Arena



**NC2279**  
Petrolio  
Petrol  
Erdoel  
Pétrole  
Petróleo



**NC2288**  
Azzurro  
Light blue  
Blau  
Bleu  
Azul



**NC9860**  
Turchese  
Turquoise  
Türkis  
Turquoise  
Turquesa

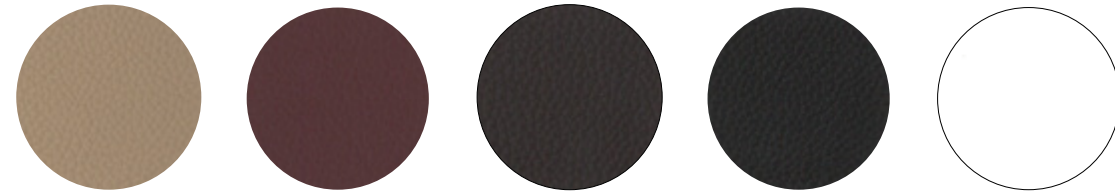
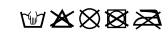


# Finiture / Finishes

# Pelle / Leather – Leder – Cuir – Piel

## Pelle – Leather – Leder – Cuir – Piel

**Composizione**  
Composition:  
100% Pelle naturale  
Leather  
**Solidità alla luce**  
Light fastness:  
8  
**Solidità alla flessione ripetuta /**  
Repeated flexural strength:  
Martindale  
≥ 50.000 cicli / cycles



**PS**  
Sabbia  
Sand  
Sand  
Sable  
Arena

**PC**  
Caffè  
Coffee  
Kaffee  
Café  
Café

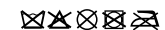
**PTM**  
Testa di moro  
Dark brown  
Dunkelbraun  
Marron  
Marrón

**PN**  
Nero  
Black  
Schwarz  
Noir  
Negro

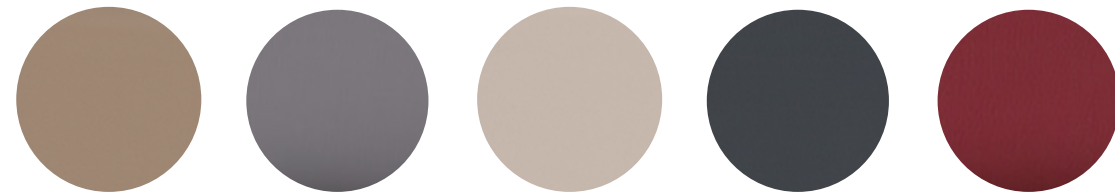
**PB**  
Bianco  
White  
Weiß  
Blanc  
Blanco

## Time

**Composizione**  
Composition:  
10% CO - 20% PES -  
70% PVC  
**Solidità alla luce**  
Light fastness:  
4/5  
**Resistenza all'abrasione**  
Abrasion resistance:  
Martindale  
≥ 102.400 secco/dry  
cicli / cycles  
≥ 51.200 umido/wet  
cicli / cycles  
**Cl. 1IM - IMO -**  
**BS7176/EN1021**  
**PARTS 1&2**  
**1994 - BS 5852**  
**(CRIB 5) -**  
**TB117:2013**



## Ecopelle – Imitation leather – Kunstleder – Similicuir – Imitación piel



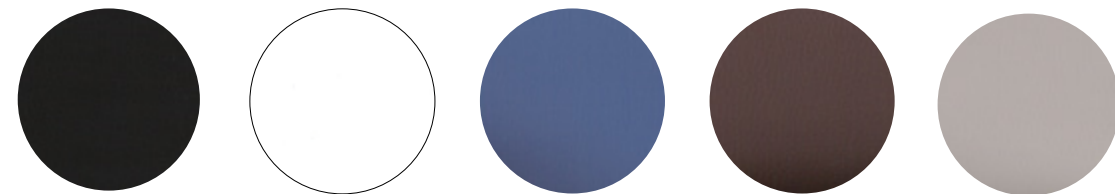
**T783**  
Sabbia  
Sand  
Sand  
Sable  
Arena

**T791**  
Grigio  
Grey  
Grau  
Gris  
Gris

**T776**  
Tortora  
Taupe  
Taubengrau  
Taupe  
Tórtora

**T792**  
Piombo  
Lead  
Blei  
Plomb  
Plomo

**T804**  
Bordeaux  
Bordeaux  
Bordeaux  
Bordeaux  
Bordeaux



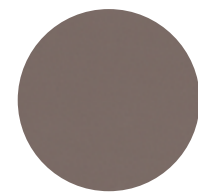
**T016**  
Nero  
Black  
Schwarz  
Noir  
Negro

**T003**  
Bianco  
White  
Weiß  
Blanc  
Blanco

**T151**  
Avio  
Air force blue  
Avio  
Bleu pétrole  
Avio

**T50**  
Cioccolato  
Chocolate  
Schokolade  
Chocolat  
Chocolate

**T777**  
Perla  
Pearl  
Perle  
Perle  
Perla



**T800**  
Fango  
Mud  
Schlammfarbe  
Boue  
Barro

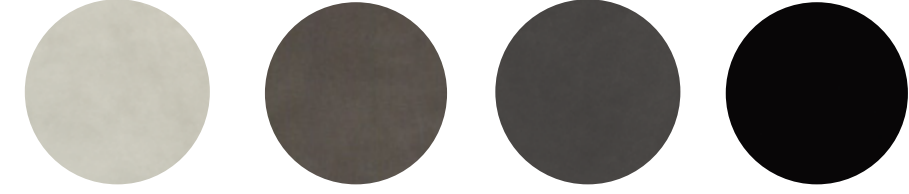
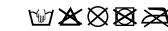
# Finiture / Finishes

# Ecopelle

Imitation leather – Kunstleder – Similicuir – Imitación piel

## Nobuko

**Composizione**  
Composition:  
88% PU, 12% AF  
**Solidità alla luce**  
Light fastness:  
5  
**Resistenza all'abrasione**  
Abrasion resistance:  
Martindale  
≥ 100.000 cicli / cycles

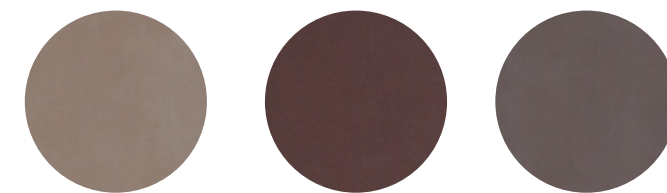


**N3**  
Crema  
Cream  
Crème  
Crème  
Crema

**N756**  
Fango  
Mud  
Schlammfarbe  
Boue  
Barro

**N516**  
Carbone  
Charcoal  
Kohle  
Charbon  
Carbón

**N780**  
Nero  
Black  
Schwarz  
Noir  
Negro



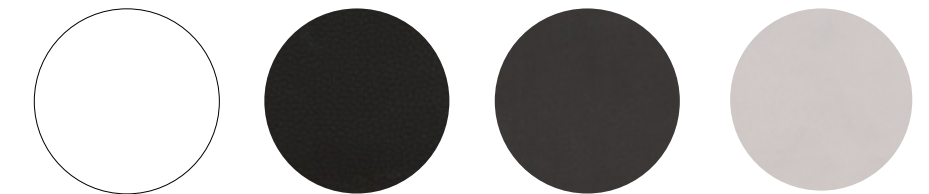
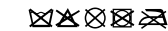
**N483**  
Beige  
Beige  
Beige  
Beige  
Beige

**N603**  
Cannella  
Cinnamon  
Zimt  
Cannelle  
Canela

**N06**  
Macchiato  
Macchiato  
Macchiato  
Macchiato  
Macchiato

## Alce

**Composizione**  
Composition:  
30% CO, 2% PU, 68% PVC  
**Solidità alla luce**  
Light fastness:  
7  
**Resistenza all'abrasione**  
Abrasion resistance:  
Martindale  
≥ 102.400 cicli / cycles  
**UNI 9175/FA1 (1IM) - IMO - FTP BS 7176/EN1021**  
**PARTS 1 & 2 1994 CALIFORNIA 117, SECTION E**  
**Ignifugicità**  
Flame-retardant



**A001**  
Bianco  
White  
Weiß  
Blanc  
Blanco

**A016**  
Nero  
Black  
Schwarz  
Noir  
Negro

**A140**  
Moka  
Moka  
Moka  
Moka  
Moka

**A175**  
Cappuccino  
Cappuccino  
Cappuccino  
Cappuccino  
Cappuccino



**A240**  
Fango  
Mud  
Schlammfarbe  
Boue  
Barro

**A450**  
Cammello  
Camel  
Kamel  
Chameau  
Camel

**A750**  
Tortora  
Taupe  
Taubengrau  
Taupe  
Tórtora

**A850**  
Antracite  
Anthracite  
Anthrazit  
Anthracite  
Gris oscuro

**A950**  
Noce  
Walnut  
Nussbaum  
Noyer  
Nuez